

Crash Test Results

New Car Safety

GEELY MK

From 2010

Dual front airbags



ANCAP
2011
Rated ★★★★★

Occupant Protection

Occupant Protection Score 20.56 out of 37

Variant: Hatch & sedan Eng: 1.5

Kerb mass: 1200 kg Category: CAR - SMALL

Vehicles built: 2010 and 2011

Model History and Safety Features

The tested model of Geely MK was introduced in New Zealand during 2010 and Australia during 2011. This ANCAP rating applies to the sedan and hatch variants. A NZ specification hatch was used for the offset test and an Australian specification sedan was used for the side impact test.

Dual front airbags and antilock brakes (ABS) with electronic brake distribution (EBD) are standard equipment. Electronic stability control (ESC) is not available on this model.

A three point seat belt is fitted to the centre rear seat of the sedan variant only. This provides better protection than a two point (lap) seat belt. The hatch variant has no centre rear seating position.

OCCUPANT PROTECTION: 3 Stars

The Geely MK scored 8.46 out of 16 in the offset crash test. The passenger compartment held its shape reasonably well. There was a moderate risk of serious chest, leg and foot injury for the driver and chest injury for the passenger.

The vehicle scored 12.10 out of 16 in the side impact crash test. There was a moderate risk of serious chest injury for the driver.



Offset crash test at 64km/h

FRONTAL OFFSET CRASH TEST

Body region scores out of 4 points each: Head/neck 4 pts, chest 1.83 pts, upper legs 1.90 pts, lower legs 0.73 pts.

The passenger compartment held its shape reasonably well in the offset crash test. The brake pedal moved rearwards by 164 mm and upwards 98 mm. The steering wheel hub moved 39 mm rearward, 52 mm upward and 1 mm sideways. The front ("A") pillar moved 19 mm rearwards. All doors remained closed during the crash. After the crash all doors could be opened with normal effort.

The airbag cushioned the head of the driver and contact was stable. Steering column components were a potential source of injury for the driver's knees. The passenger's head was cushioned by the airbag.

Early in the crash the driver inboard seat slide mechanism released, allowing the driver's seat to move forwards on the inboard side.

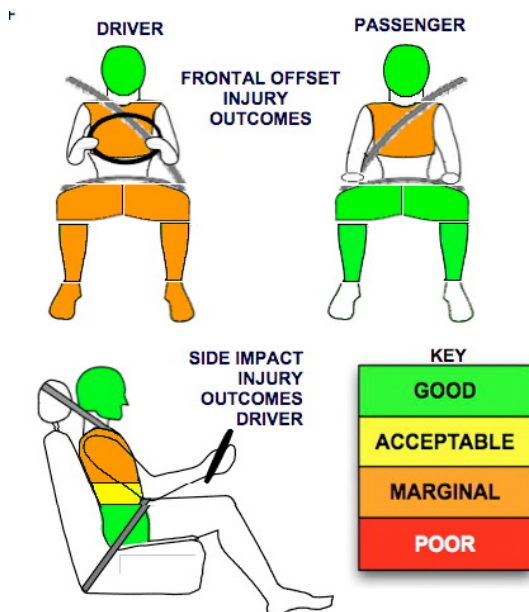
SIDE IMPACT CRASH TEST

Body region scores out of 4 points each: Head 4 pts, chest 1.34 pts, abdomen 3.76 pts, pelvis 4 pts.

During the side impact crash test the rear door on the driver's side became unlatched.

The vehicle was not eligible for a Pole Impact Test. This test can earn eligible vehicles an extra two points.

PEDESTRIAN PROTECTION: NOT TESTED



September 2011

PO Box 4041

Manuka ACT 2603

geely_mk_11.doc

Issued 6/9/2011



ANCAP

Crash testing for safety

AUSTRALASIAN
NEW CAR ASSESSMENT
PROGRAM

www.ancap.com.au

TECHNICAL DATA - GEELY MK - From 2010

INJURY MEASUREMENTS

Body region	Offset Crash Test at 64km/h (v4.2)		Side Impact Crash Test at 50km/h (v4.2)
	Driver	Passenger	Driver
Head HIC	589	668	120
Acceleration (g for 3ms)	60.8	62.5	51.7
Neck - Shear (kN)	0.28	0.79	-
Tension (kN)	2.46	2.01	-
Extension (Nm)	7.6	14.5	-
Chest Accln (g for 3ms)	51.70	43.90	-
Compression (mm)	37.20	37.20	35.30
Viscous criterion (m/s)	0.22	0.16	0.62
Abdomen - Force (kN)	-	-	1.09
Pelvis - Force (kN)	-	-	2.40
Upper legs Force (kN)			
Left	2.07	0.73	
Right	1.52	1.25	
Knee displ (mm)			
Left	10.72	0.93	
Right	6.18	3.11	
Lower legs Force (kN)			
Left	1.48	1.50	
Right	1.27	1.46	
Index (Upper/Low)			
Left	0.80 /0.53	0.23 /0.21	
Right	0.62 /0.84	0.32/0.15	

Bonus points (maximum 5)

Pole Test: Not eligible

Seat belt reminders: None (see table below for details)

Modifiers - deductions from offset test scores

Head	No deduction
Chest	No deduction
Upper leg: Variable & conc. loading	2 pt deduction Right
Lower leg: Pedal Upward Movement	1 pt deduction
Foot score: Pedal Rearward and Blocked	Score 0.728 points

Note: Steering column and pedal movements are measured relative to the driver's seat.

Modifiers - deductions from side impact test scores

Chest	No deduction
Door Open (right rear)	1 pt deduction

Safety features

These specifications are subject to change. Please check with manufacturer for the latest specifications.



Driver airbag	S	Antilock (ABS) brakes / Electronic brake distribution / Brake Assist	S/S/X
Passenger front airbag	S	Electronic stability control (ESC, VSC, DSC, ESP, VSA)	X#
Side airbags, front seats - chest protection	X	3 point centre rear seat belt	S (sedan)
Side airbags, front seats - head protection	X	Whiplash rating	Not Tested
Side airbags, rear seats - head protection	X	Intelligent seat belt reminder - driver	X
Driver knee airbag	X	Intelligent seat belt reminder - front passenger	X
Seat belt pretensioners (Front/rear outboard)	X/X	Intelligent seat belt reminder - rear seats	X

Key:

S = standard on all variants

O = optional on base variant. May be standard on higher variants

V= not available on base variant but standard or optional on higher variants

X = not available on any variant

ESC required by ANCAP for 5 star rating from 2008