

ANCAP Safety Rating: HYUNDAI TUCSON (Late 2015 - onwards)



Frontal offset test at 64km/h

This ANCAP safety rating applies to:

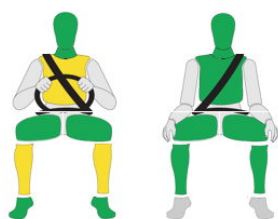
Make / Model	Hyundai Tucson
Year Range	Late 2015 - onwards (see below)
Variant(s)*	All variants
Vehicle Type	Medium SUV

This ANCAP safety rating applies to all Tucson variants built from 17th November in Korea or 16th December in the Czech Republic, when several safety-related improvements were introduced. 2015 Tucson variants built prior to these dates are either 4 stars (2.0 litre GDi variant) or are unrated.

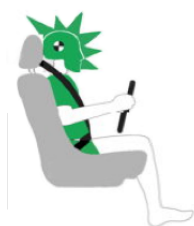
Dual frontal, side chest and side head airbags (curtains) are standard. Electronic Brake Distribution (EBD), Emergency Brake Assist (EBA) are also standard. Advanced seat belt reminders are fitted to all seats.

Injury Outcomes.

Frontal Offset



Side Impact & Pole*



Whiplash Protection

Driver



	GOOD
	ACCEPTABLE
	MARGINAL
	POOR

* Head protection only.

Test Results Summary.

Airbags	Dual Frontal, Side, Head
Frontal Offset Test	14.53 (out of 16)
Side Impact Test	16.00 (out of 16)
Pole Test	2 (out of 2)
Whiplash Protection	Good
Pedestrian Protection	Marginal
ESC	Standard
Seat Belt Reminders	3.0 (out of 3)
Overall Score	35.53 (out of 37)
ANCAP Safety Rating	★★★★★
Rating Year[^]	2015

Occupant Protection.

Frontal Offset Test

Each body region is scored out of 4 points

Head / neck:	4.00 points
Chest:	3.73 points
Upper legs:	4.00 points
Lower legs:	2.80 points

The passenger compartment held its shape well in the offset test. Pedal and steering wheel displacements were well controlled. Driver and passenger contact with the airbags was stable. All doors remained closed during the crash. After the crash all doors could be opened with normal effort.

Side Impact Test

Each body region is scored out of 4 points

Head:	4.00 points
Chest:	4.00 points
Abdomen:	4.00 points
Pelvis:	4.00 points

The side impact test normally used by ANCAP simulates a small car striking the driver's door of the test vehicle. Experience shows that large vehicles like the Tucson can be expected to perform well in this test. ANCAP has adopted a policy of awarding these types of vehicles a default score of 16 points (out of 16).

Pole Test

Scored out of 2 points

Score:	2.00 points
--------	-------------

The vehicle was eligible for a side pole test because it has side curtain airbags. The vehicle scored the maximum 2 points for head protection in this test.

Whiplash Protection Test

Whiplash protection is assessed to the RCAR Protocol

Geometric test:	Good
Dynamic test:	Good
Overall whiplash rating:	Good

ANCAP Safety Rating: HYUNDAI TUCSON (Late 2015 - onwards)



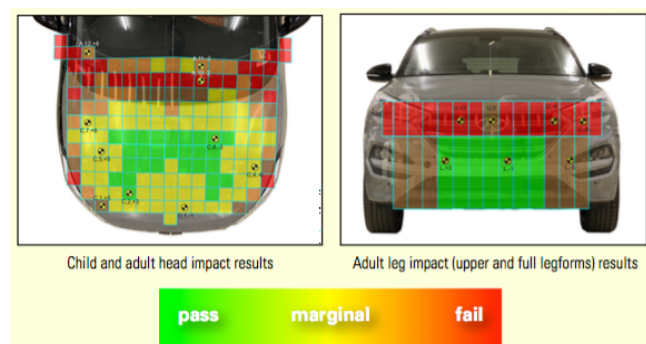
Pedestrian Protection.

Pedestrian Test

Scored out of 36 points

Adult & child head impacts: 13.58 points
Upper leg impacts: 0.15 points
Lower leg impacts: 4.62 points

This vehicle scored 18.35 out of 36 points (Marginal). Some points have been gained in the central area of the bonnet. Improvements could be made to the upper leg area that would result in better performance for this vehicle. The European model tested by Euro NCAP had a pop-up bonnet that provided less injury risk to pedestrians. This is not available on Australasian models. (v8)



Safety Features & Technologies.

Descriptions of each of these safety features and safety assist technologies (SAT) and detail on fitting requirements for each star rating level can be found at ancap.com.au.

Safety Feature / Safety Assist Technology	Availability
Seat belts (three-point) for all forward-facing seats	S
Seat belt pretensioners (front)	S
Seat belt pretensioners (rear outboard)	E
Intelligent seat belt reminder (driver)	S
Intelligent seat belt reminder (front passenger)	S
Intelligent seat belt reminder (2 nd row seats)	S
Airbag - Front (driver)	S
Airbag - Front (passenger)	S
Airbag - Side, chest protection (front seats)	S
Airbag - Side, chest protection (2 nd row seats)	X
Airbag - Side, head protection (front seats)	S
Airbag - Side, head protection (2 nd row seats)	S
Airbag - Knee (driver)	X
Airbag - Knee (front passenger)	X
Head restraints for all seats	S
Active (pop-up) bonnet for pedestrian protection	E
Adaptive cruise control (ACC)	X
Adaptive front lighting systems	V
AEB (Autonomous emergency braking) - city	V
AEB - Interurban	V
AEB - Vulnerable road user	X
Antilock braking system (ABS)	S
Automatic headlights	S
Blind spot detection	V
Daytime running lights (DRL)	S
Electronic brakeforce distribution (EBD)	S
Electronic stability control (ESC)	S
Emergency brake assist (EBA)	S
Emergency stop signal	S
Hill launch assist	S
Lane support system (LSS)	V
Rain-sensing windscreen wipers	V
Reversing collision avoidance	S
Rollover warning	S
Speed assistance - automatic speed limiting (ISA)	X
Speed assistance - manual speed limiting	E
Speed assistance - speed limit information (camera/map)	E
Trailer stability control	S
Tyre pressure monitoring system (TPMS)	V

These specifications are subject to change. Please check with the manufacturer for the latest specifications.

S = Standard on all variants.
O = Optional on base variant. May be standard on higher variants.
V = Not available on base variant but standard or optional on higher variants.
X = Not available on any variant.
E = Available in Europe / USA but not available on any Australasian variant.

Score Deductions.

Deductions from frontal offset test scores

Head / neck: No deductions
Chest: No deductions
Upper legs: No deductions
Lower legs: No deductions

Deductions from side impact test score

Chest: High-seat vehicle: default side impact score awarded.

Deductions from pole test score

Head: No deductions.

ANCAP Safety Rating: HYUNDAI TUCSON (Late 2015 - onwards)



ANCAP
Safety ★★★★★



Injury Values & Measurements.

Body Region	Frontal offset test at 64 km/h (v5.1)		Side impact test at 50 km/h (v5.1)	
	Driver	Passenger	Driver	
Head				
HIC	308.00	261.00	HIGH-SEAT VEHICLE DEFAULT SCORE AWARDED	
Acceleration (g for 3ms)	43.00	42.20		
Neck				
Shear (kN)	0.45	-0.42		
Tension (kN)	1.27	0.88		
Extension (Nm)	19.80	23.30		
Chest				
Acceleration (g for 3ms)	-	-		
Compression (mm)	23.90	17.40		
Viscous criterion (m/s)	0.07	0.05		
Abdomen				
Force (kN)	-	-		
Pelvis				
Force (kN)	-	-		
Upper legs				
Femur force left (kN)	0.22	0.04		
Femur force right (kN)	0.17	0.22		
Knee displacement left (mm)	0.33	0.73		
Knee displacement right (mm)	0.12	0.65		
Lower legs				
Force left (kN)	1.91	1.04		
Force right (kN)	2.53	1.39		
Index (upper / lower) left	0.33 / 0.67	0.29 / 0.23		
Index (upper / lower) right	0.49 / 0.56	0.32 / 0.32		
Intrusion Measurements⁺				
Steering column				
Forward (mm)	31			
Downward (mm)	8			
Sideways (mm)	18			
Pedals				
Brake - rearward (mm)	68			
Brake - upward (mm)	45			
A-Pillar				
Rearward (mm)	0			

+ Steering column and pedal movements are measured relative to the driver's seat.

* ANCAP safety ratings do not automatically extend to variants that have different body styles, engine configurations, driven wheels or occupant restraint systems (e.g. fewer airbags). In these cases, ANCAP considers technical evidence submitted by manufacturers before deciding on extending a rating to additional variants of a model. For further information about the application of ANCAP safety ratings to model variants, see the ANCAP Variant Policy.

^ The Rating Year denotes the year requirements against which a vehicle has been assessed. The Rating Year is determined by ANCAP and may be based on the year in which a new vehicle model is first launched into the Australian and/or New Zealand markets; the year in which the vehicle was tested (if tested by Euro NCAP); or, for vehicles which hold an existing ANCAP safety rating, the year in which the rating was updated (or earlier applicable year).

Assessment Details.

Tested Make / Model	Hyundai Tucson
Tested Vehicle(s) Built	November 2015
Tested Body Type	Wagon
Tested Vehicle Kerb Weight	1700 kg
Tested Vehicle Engine	2.0 litre GDi petrol
Tested By	ANCAP
Assessed By	ANCAP
Document Reference	Tucson16
Rating Published	January 2016
Document created/revised	17/12/2015

