

Crash Test Results

New Car Safety

MINI COUNTRYMAN (Diesel)

From 2011 Front+side+head airbags



Offset crash test at 64km/h

FRONTAL OFFSET CRASH TEST

Body region scores out of 4 points each: Head/neck 4 pts, chest 2.99 pts, upper legs 1.48 pts, lower legs 3.42 pts.

The passenger compartment held its shape well in the offset crash test. The brake pedal moved rearwards by 34 mm and downwards 4mm. The steering wheel hub moved 39mm rearward, 7mm downward and 6 mm sideways. The front ("A") pillar moved 3 mm rearwards. All doors remained closed during the crash.

The airbag cushioned the head of the driver and contact was stable. Dash components were a potential source of injury for the driver and passenger knees. The passenger's head was cushioned by the airbag.

SIDE IMPACT CRASH TEST

Body region scores out of 4 points each: Head 4 pts, chest 4 pts, abdomen 4 pts, pelvis 4 pts.

The vehicle was eligible for an optional pole impact test, since it had head-protecting side airbags. The vehicle earned the maximum two points in this test.

PEDESTRIAN PROTECTION: Acceptable

The bumper offered good protection to pedestrians' legs and scored maximum points. The front edge of the bonnet was rated as poor in some areas and marginal in others. The bonnet scored maximum points for the protection it offered to the head of struck child, giving good protection in all areas tested. In those areas where an adult's head might strike, however, the car provided predominantly poor protection.

PEDESTRIAN PROTECTION		
ACCEPTABLE	Child head impacts	12
	Adult head impacts	3.27
	Upper leg impacts	1.54
	Lower leg impacts	6
	Total (out of 36)	22.81

Tested by Euro NCAP v5.1



Occupant Protection Score 31.89 out of 37

Variant: FWD Eng: 1.6 litre diesel
Kerb mass 1390 kg Category: CAR - SMALL
Vehicles built: 2010 Tested by Euro NCAP

Important note: The *diesel right-hand-drive* European model was tested by Euro NCAP. Australasian specifications may vary and therefore models sold in Australasia might provide different levels of protection to those described on this page.

Model History and Safety Features

The tested model of MINI Countryman was introduced in Australia during 2011. This 4-star ANCAP rating applies to front-wheel-drive variants with a 1.6 litre diesel engine. Further technical information is being sought about other variants.

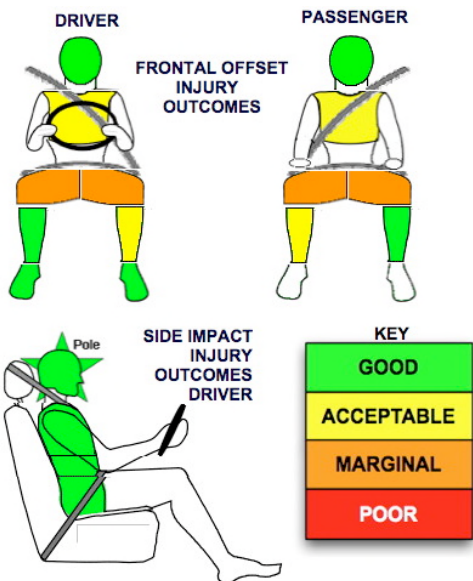
Dual front airbags, side airbags and head-protecting side curtains are standard equipment. Antilock brakes (ABS), electronic brakeforce distribution (EBD) and electronic stability control (ESC) are also standard. Intelligent seat belt reminders are fitted to both front seats.

Pretensioners are fitted to the front seat belts to reduce slack in the event of a crash.

OCCUPANT PROTECTION: 4 Stars

The MINI Countryman scored 11.89 out of 16 in the offset crash test (ANCAP requires at least 12.5 for a 5-star rating). The passenger compartment held its shape well. Protection from serious leg injury was marginal for the driver and passenger.

The vehicle scored 16 out of 16 in the side impact crash test and a further two points in the pole test.



DECEMBER 2011

PO Box 4041
Manuka ACT 2603
countryman11.doc
Issued 6/12/2011



TECHNICAL DATA - MINI COUNTRYMAN - From 2011

INJURY MEASUREMENTS

Body region	Offset Crash Test at 64km/h (v5.1)		Side Impact Crash Test at 50km/h (v5.1)
	Driver	Passenger	Driver
Head HIC	789	433	53
Acceleration (g for 3ms)	67.4	49.5	26.6
Neck - Shear (kN)	0.55	0.77	-
Tension (kN)	1.93	0.76	-
Extension (Nm)	12.3	6.0	-
Chest Accln (g for 3ms)	-	-	-
Compression (mm)	29.10	24.21	18.43
Viscous criterion (m/s)	0.18	0.09	0.14
Abdomen - Force (kN)	-	-	0.680
Pelvis - Force (kN)	-	-	0.960
Upper legs Force (kN)			
Left	2.37	2.00	
Right	2.05	3.10	
Knee displ (mm)			
Left	0.50	0.30	
Right	0.60	7.16	
Lower legs Force (kN)			
Left	1.68	1.38	
Right	1.87	0.95	
Index (Upper/Low)			
Left	0.45 /0.53	0.29 /0.20	
Right	0.35 /0.21	0.51/0.16	

Bonus points (maximum 5)

Pole Test: 2 pts

Seat belt reminders: 2 (see table below for details)

Modifiers - deductions from offset test scores

Head No deduction

Chest No deduction

Upper leg Variable & conc. loading 2 pt deduction Left & Right
for driver and passenger

Lower leg No deduction

Foot score Score 4 points

Modifiers - deductions from side impact test scores

Chest No deduction

Safety features

These specifications are subject to change. Please check with manufacturer for the latest specifications.



Driver airbag	S	Antilock (ABS) brakes / Electronic brake distribution / Brake Assist	S/S/X
Passenger front airbag	S	Electronic stability control (ESC, VSC, DSC, ESP, VSA)	S#
Side airbags, front seats - chest protection	S	3 point seat belt for all forward-facing seats	S
Side airbags, front seats - head protection	S	Whiplash protection (RCAR protocol)	Pending
Side airbags, rear seats - head protection	S	Intelligent seat belt reminder - driver	S
Driver knee airbag	X	Intelligent seat belt reminder - front passenger	S
Seat belt pretensioners (Front/Rear outboard)	S/X	Intelligent seat belt reminder - rear seats	X

Key:

S = standard on all variants

O = optional on base variant. May be standard on higher variants

V= not available on base variant but standard or optional on higher variants

X = not available on any variant

ESC required by ANCAP for 5 star rating from 2008