

Crash Test Results

New Car Safety

TOYOTA COROLLA SEDAN

2007 on Front+side+head+knee airbags



Offset crash test at 64km/h

FRONTAL OFFSET CRASH TEST (v4.1)

Body region scores out of 4 points each: Head/neck 4 pts, chest 2.81 pts, upper legs 4 pts, lower legs 3.82 pts.

The passenger compartment held its shape well in the offset crash test. The brake pedal moved rearwards by 76 mm. The clutch pedal moved upwards 6 mm. The steering wheel hub moved forwards 30mm, upwards 1 mm and sideways 6mm. The front ("A") pillar moved 9 mm rearwards. All doors remained closed during the crash. After the crash high manual effort was required to open the driver's door.

The airbag cushioned the head of the driver and contact was stable. There were no knee modifiers. The passenger's head was cushioned by the airbag.

SIDE IMPACT CRASH TEST (v4.1)

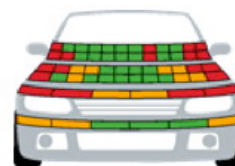
Body region scores out of 4 points each: Head 4 pts, chest 4 pts, abdomen 4 pts, pelvis 4 pts.

The vehicle was eligible for an optional pole impact test, since it had head-protecting side airbags and scored four points for the head in the side impact test. The manufacturer decided to go ahead with the pole test. A door opened during the crash and so the vehicle earned 1 out of 2 available points.

PEDESTRIAN PROTECTION: Acceptable*

PEDESTRIAN PROTECTION	Child head impacts	8.86
ACCEPTABLE	Adult head impacts	7.5
	Upper leg impacts	0.92
	Lower leg impacts	5.86
	Total (out of 36)	23.14
	Tested by Euro NCAP (v4.1)	

* Based on tests to a previous protocol. Scores might vary under the latest test protocol.



- PASS
- MARGINAL
- FAIL



Occupant Protection Score 33.63 out of 37

Variant: SEDAN Eng:

Kerb mass: 1290 kg Category: CAR - SMALL

Vehicles built: 2007 Tested by Euro NCAP

Important note: The *left-hand-drive* European model was tested by Euro NCAP. Australasian specifications may vary and therefore models sold in Australasia might provide different levels of protection to those described on this page.

Model History and Safety Features

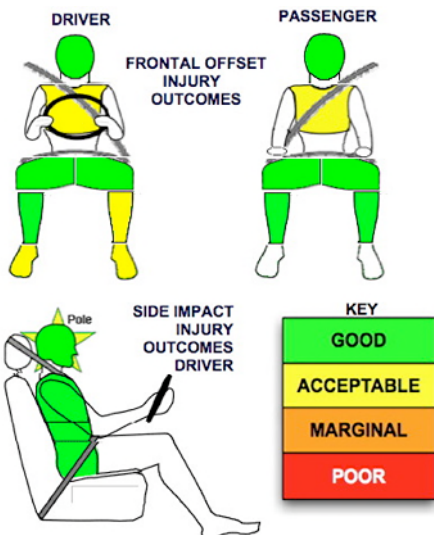
The tested model of Toyota Corolla sedan was introduced in Australia during 2007. This 5-star ANCAP rating applies to all Corolla sedans with 7 airbags. A separate ANCAP rating is available for Corollas built before October 2010 with dual airbags.

Dual front airbags are standard equipment. Antilock brakes (ABS) with electronic brake distribution (EBD) are also standard. Side airbags, a driver knee airbag, head-protecting side curtains and Electronic Stability Control (ESC) are standard on all variants from October 2010. Check with the manufacturer for safety features prior to this. Intelligent seat belt reminders are fitted to both front seats.

Pre-tensioners are fitted to the front seat belts to reduce slack in the event of a crash. A three point seat belt is fitted to the centre rear seat. This provides better protection than a two point (lap) seat belt.

OCCUPANT PROTECTION: 5 Stars

The Toyota Corolla sedan scored 14.63 out of 16 in the offset crash test. The passenger compartment held its shape well. There was a slight risk of chest injury for the driver and passenger. The vehicle scored 16 out of 16 in the side impact crash test and one point in the pole test.



Whiplash Protection



June 2007

PO Box 4041

Manuka ACT 2603

corolla07s.doc

Revised 15/12/2011



ANCAP

Crash testing for safety

AUSTRALASIAN
NEW CAR ASSESSMENT
PROGRAM

TECHNICAL DATA - TOYOTA COROLLA SEDAN (LHD) - 2007 on

INJURY MEASUREMENTS

Body region	Offset Crash Test at 64km/h (v4.1)		Side Impact Crash Test at 50km/h (v4.1)
	Driver	Passenger	Driver
Head HIC	444	275	63
Acceleration (g for 3ms)	51.1	42.0	23.4
Neck - Shear (kN)	0.43	0.48	-
Tension (kN)	1.83	1.15	-
Extension (Nm)	8.3	19.0	-
Chest Accln (g for 3ms)	-	-	-
Compression (mm)	27.94	30.34	18.23
Viscous criterion (m/s)	0.07	0.10	0.10
Abdomen - Force (kN)	-	-	0.600
Pelvis - Force (kN)	-	-	1.460
Upper legs Force			
Left (kN)	1.27	1.02	
Right (kN)	1.03	0.05	
Knee displ (mm)			
Left	0.10	1.30	
Right	0.90	0.30	
Lower legs Force			
Left (kN)	2.16	1.80	
Right (kN)	1.87	1.77	
Index (Upper/Low)			
Left	0.44 /0.20	0.26 /0.16	
Right	0.24 /0.29	0.29/0.13	

Bonus points (maximum 5)

Pole Test: 1 pts

Seat belt reminders: 2 (see table below for details)

Modifiers - deductions from offset test scores

Head	No deduction
Chest	No deduction
Upper leg Variable & conc. loading	No deduction
Lower leg	No deduction
Foot score	Blocked pedal Score 3.85 points

Modifiers - deductions from side impact test scores

Chest	No deduction
Pole test Door opened during crash	1 pt deduction

Safety features (from October 2010)

These specifications are subject to change. Please check with manufacturer for the latest specifications.

Driver airbag	S	Antilock (ABS) brakes / Electronic brake distribution/Brake assist	S/S/S
Passenger front airbag	S	Electronic stability control (ESC, VSC, DSC, ESP, VSA)	S
Side airbags, front seats - chest protection	S	3 point centre rear seat belt	S
Side airbags, front seats - head protection	S	Whiplash protection (RCAR protocol)	Good
Side airbags, rear seats - head protection	S	Intelligent seat belt reminder - driver	S
Driver knee airbag	S	Intelligent seat belt reminder - front passenger	S
Seat belt pretensioners (front/rear outboard)	S/X	Rear seat belt status indicator	X

Key:

S = standard on all variants

O = optional on base variant. May be standard on higher variants

V= not available on base variant but standard or optional on higher variants

X = not available on any variant

